

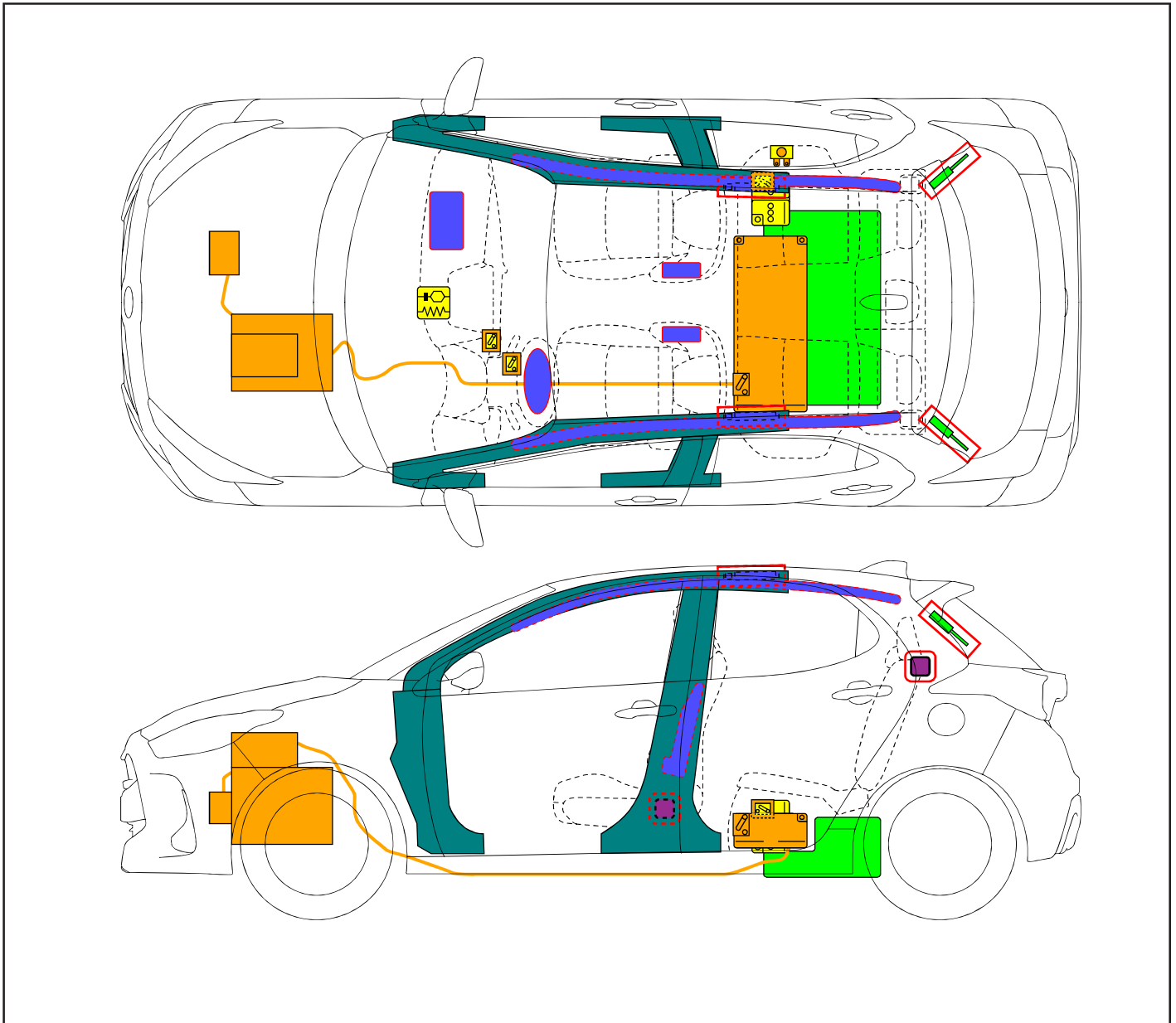
Yaris Hybrid

XPA1F

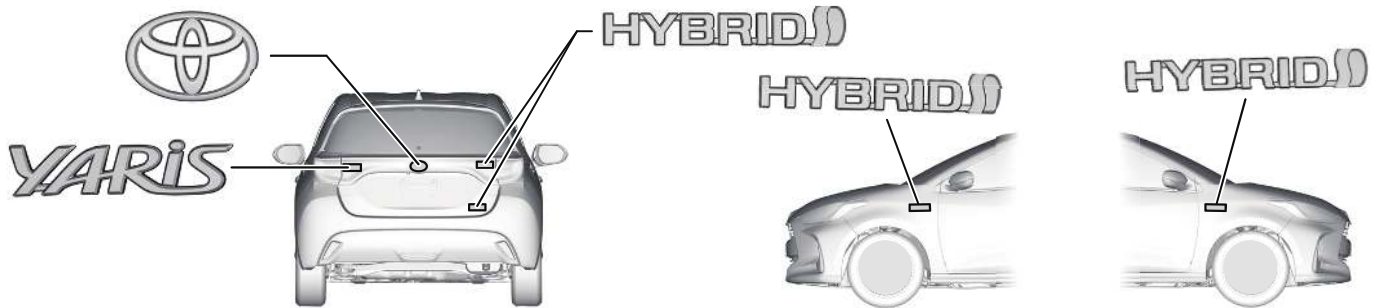
ab 07.2020



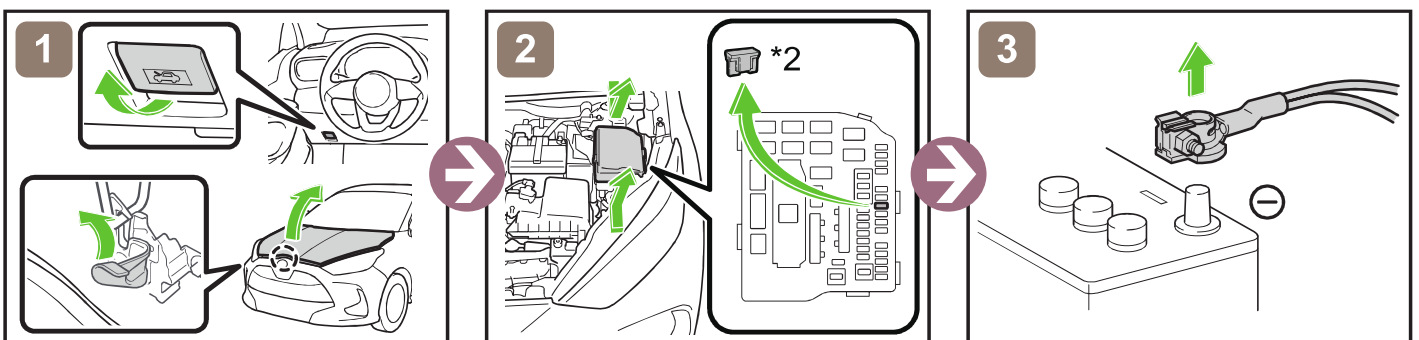
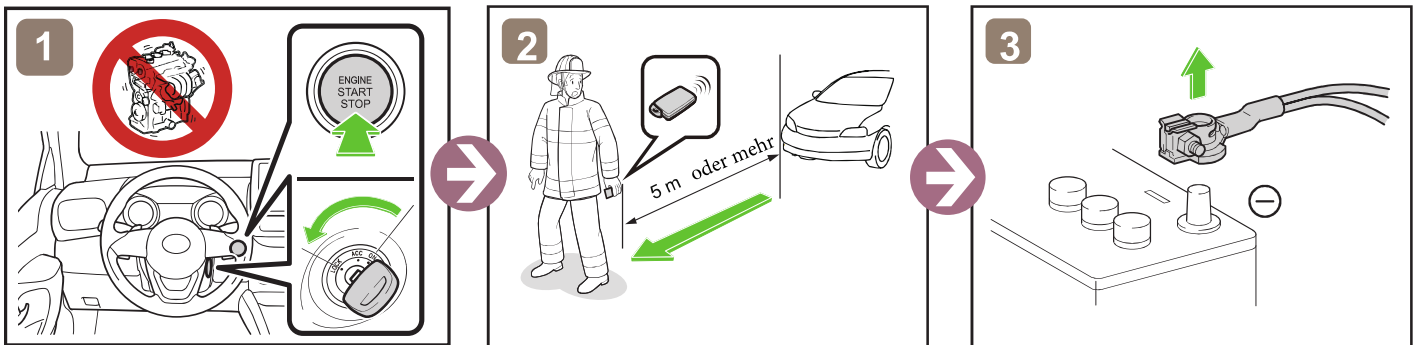
TOYOTA



	Zündschalter		Sicherungskasten		12V Batterie
	Airbag		Gasgenerator		Kraftstofftank
	Gasdruckdämpfer		Gurtstraffer		Karosserieverstärkung
	Steuergerät				
					

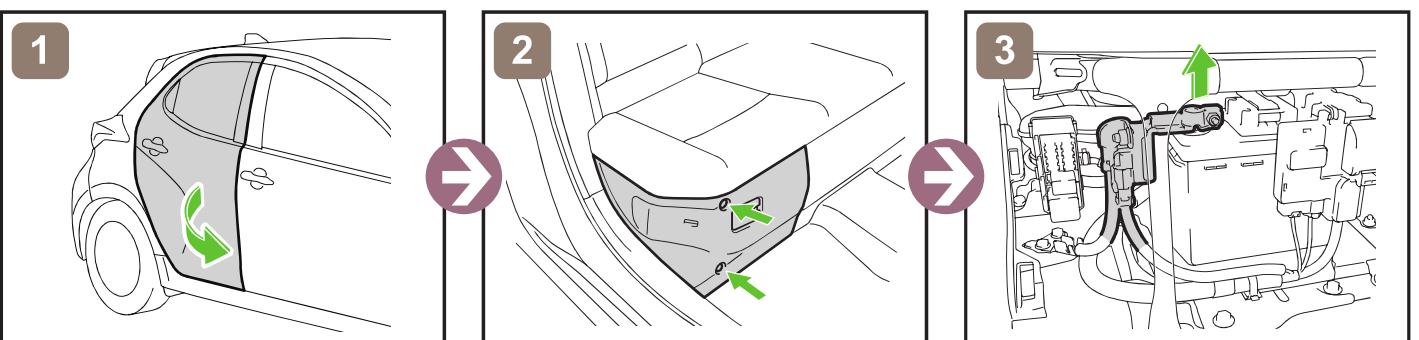


Fahrzeug ausser Betrieb setzen



*2: IGP-MAIN FUSE (25 A CLEAR)

Zugang 12V Batterie



Yaris Hybrid

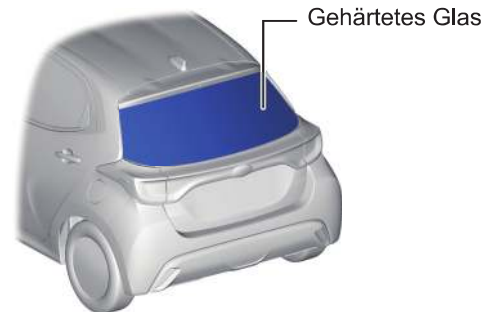
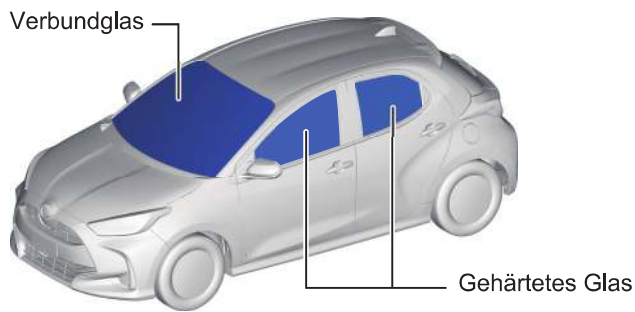
XPA1F

ab 07.2020



Zugang Innenraum

■ Fahrzeugscheiben



Hinweise zum Transport

