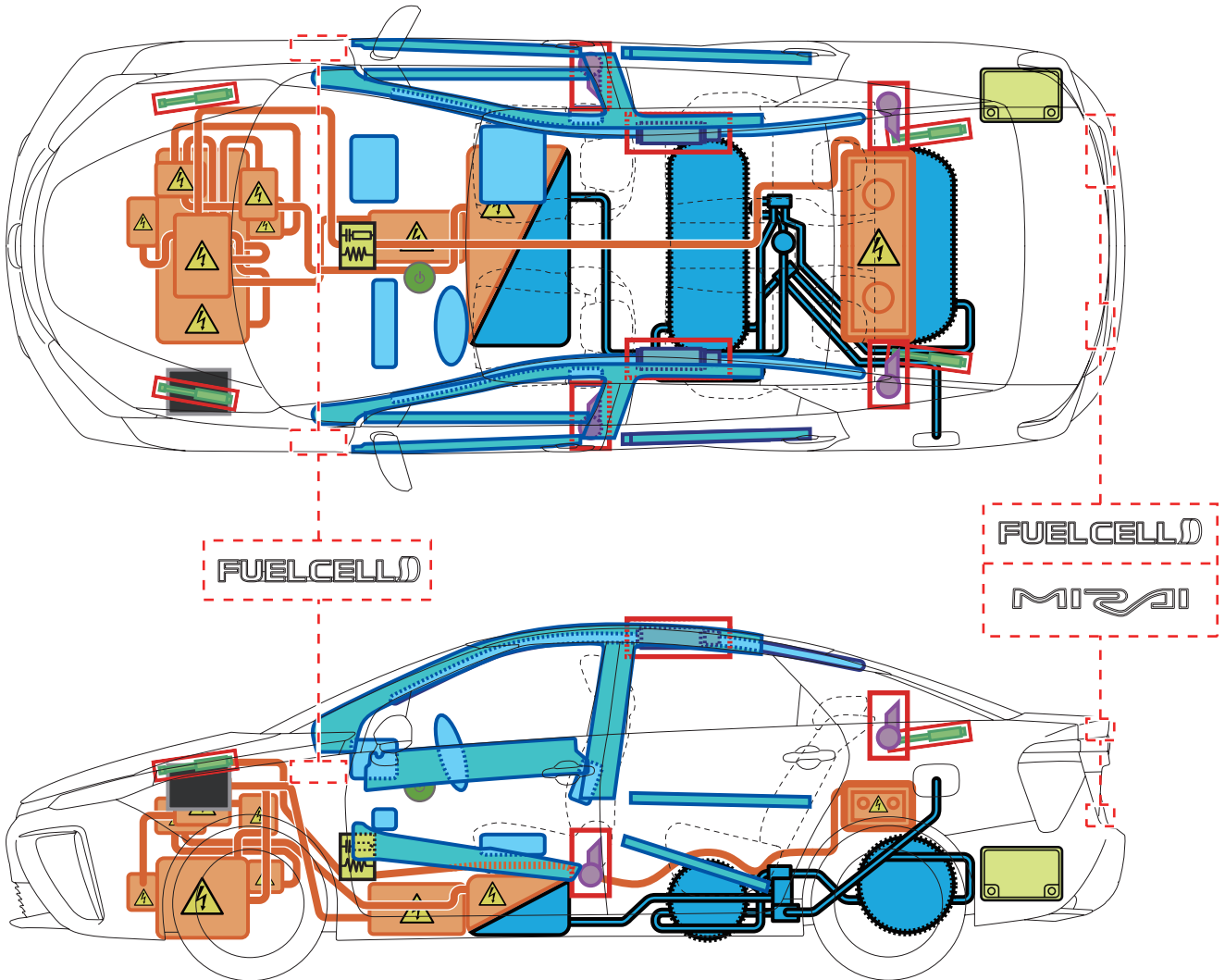







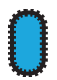







Toyota Mirai (AD1 (EU, M) 06 2015)



Legende

	Zündschalter		Sicherungs- kasten		12 Volt- Batterie
	Airbag		Gas- generator		Hochvolt- Batterie
	Hochvolt- bauteile		Hydrogen- tank		Hydrogen- komponenten
	Gasdruck- dämpfer		Gurtstraffer		Karosserie- verstärkung
	Steuergerät				

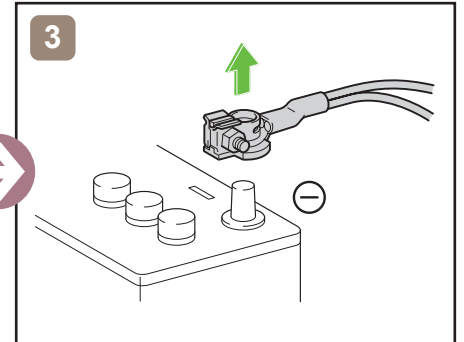
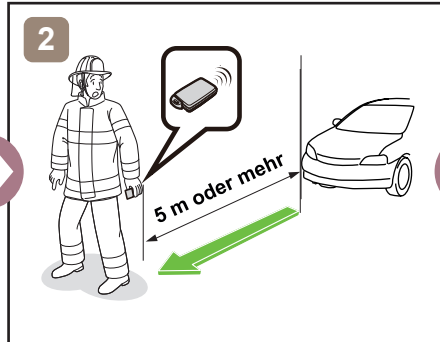
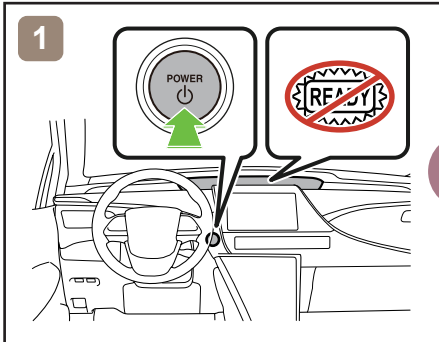
A

(Toyota Mirai AD1 (EU, M) 06 2015)

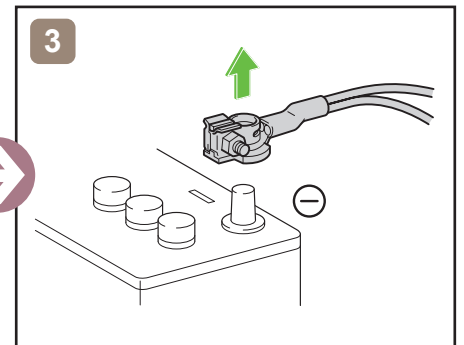
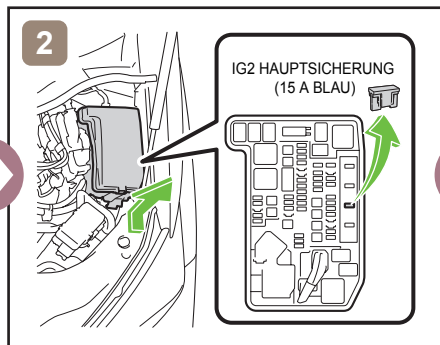
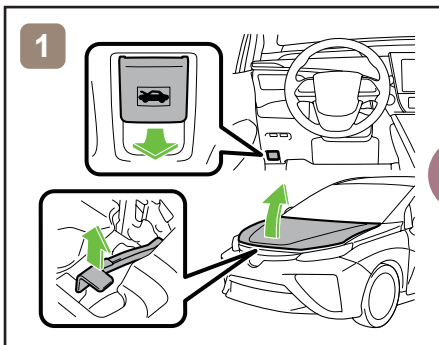
Toyota Mirai (AD1 (EU, M) 06 2015)



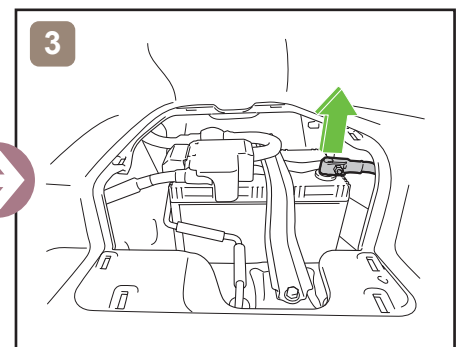
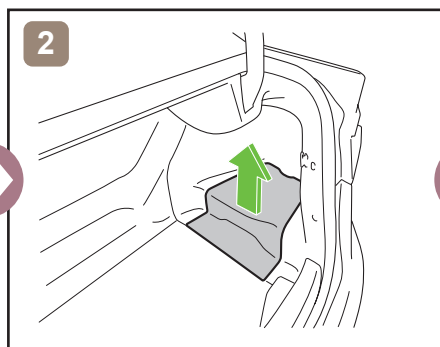
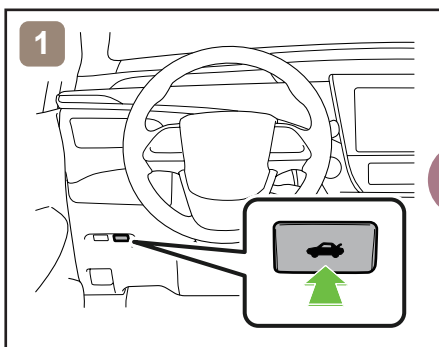
12V Spannungsversorgung trennen



oder



Zugang 12V Batterie



Hinweise zum Transport

